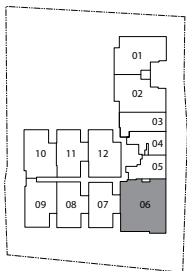
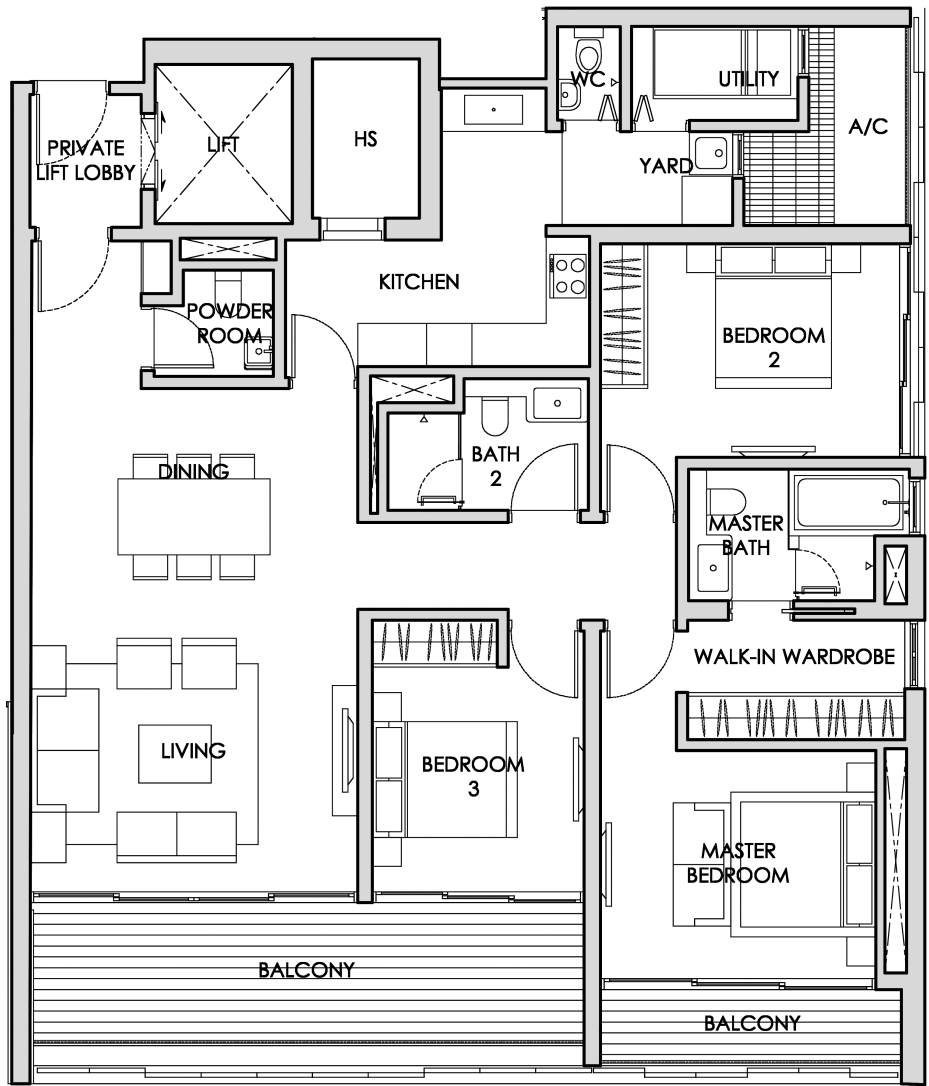


3 BEDROOM



**TYPE C2
STACK 06**

UNIT #02-06 TO #09-06
AREA 161 SQM / 1733 SQFT



The plans are for general guidance only and subject to changes as may be approved by the relevant authority. The floor plans are approximate measurements and subject to final survey. BP Approval Nos.: A1002-00003-2011-BP01 Dated 30 April 2012, A1002-00003-2011-BP02 Dated 15 October 2012 & A1002-00003-2011-BP03 Dated 11 February 2016